

KESSLER

SCHOLARS

Community Conversations

Embracing Families for
First-Gen Student Support

09.21.2021

Agenda

1. Welcome & Check-In
2. Family Engagement for First-Gen Student Support
3. Group Discussion and Share-Out
4. Looking Ahead



Campus Staff Updates

Welcome to the Kessler Scholars Collaborative:

- **Miriam Attal**, Student Support Coordinator
University of Michigan
- **Kenneth Harvey**, Graduate Administrative Associate
The Ohio State University
- **Milan Thomas**, Program Coordinator
The Ohio State University
- **Carlota Deseda-Coon**, Kessler Scholars Director
Syracuse University | Start date: September 26
- **Jurnee Peltier**, Graduate Assistant
Syracuse University

With our thanks and best wishes:

- Breana Nieves Vergara | Syracuse University
- Sabrina Brown | Washington University in St. Louis

Kessler Kudos

Cheers to the teams at **Bates College, Centre College, University of Dayton, University of Michigan**, and the **University of North Carolina-Chapel Hill** for already executing warm and welcoming Kessler Coin Ceremonies!



Hooray, colleagues at **UC Riverside**, for showcasing the Kessler Scholars Program to attendees of the of the Higher Education Seminar of the Education Writers Association, sponsored by Bloomberg Philanthropies!



Look out for **Centre, Saint Mary's, and U-M** – currently leading on completion rates for the incoming scholar survey and the pizza party pursuit!

What else would you like to share or celebrate?

HAPPY

Birthday



Miriam Attal

Kia Fletcher

Harrison Robert Glasener

Anthony Desiderio

Shakima M. Clency

Ramsey Piazza

Hannah Stokes

Maggie Dykstra



Let's Chat! Questions, Challenges, Successes?

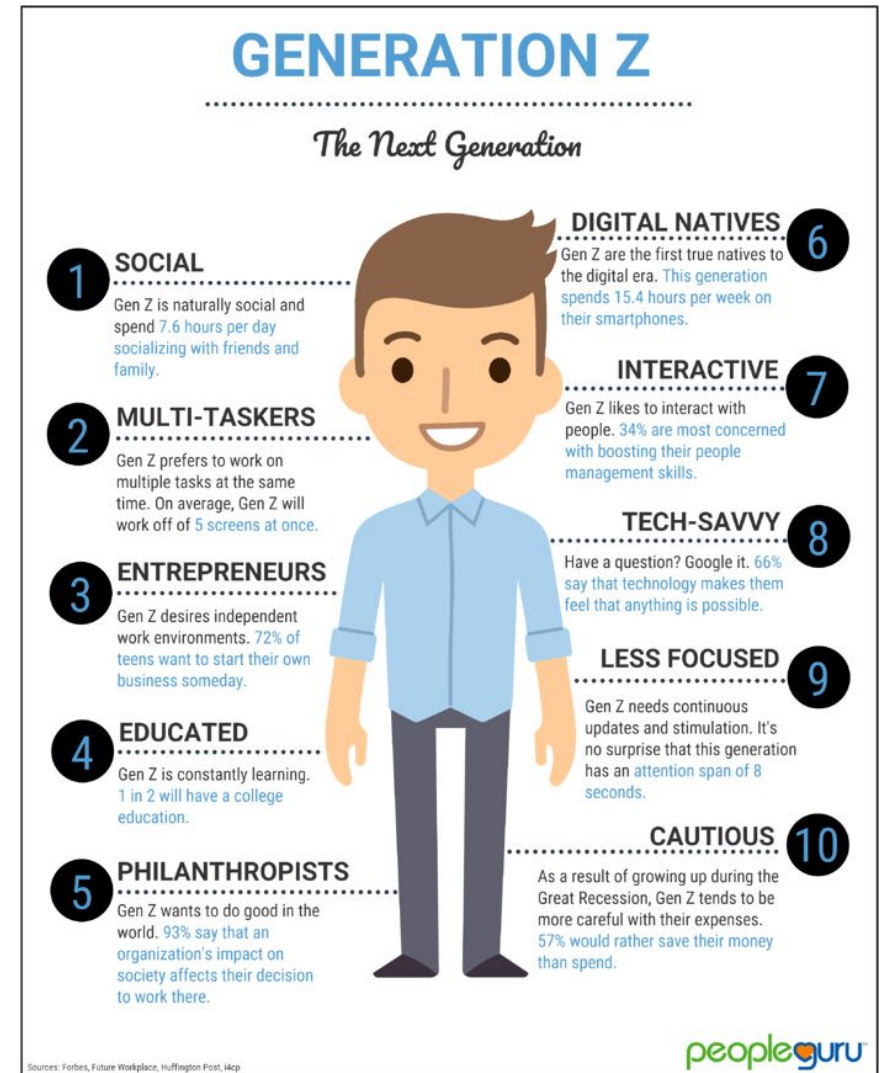
1. As the academic year gets underway, how are things going so far?
2. What questions do you have or want to know more about?
3. Share and discuss a challenge or success.

Generation Z and Family Factors

Born between 1995 - 2010

Significant changing dynamics

- Over 65% are raised in multi-generational households, divorced families, blended families, etc.
- Many raised by older parents
- Students have close relationships with their parents
- Strong need for protection and security
- Collectivist culture and orientation



Benefits of Parental Engagement

- Improves student retention
- Helps students stay grounded and connected to their home communities
- Provides source of inspiration, strength, and pride
- Offers financial and emotional support
- Extends support system for students in distress

What else do we know about the ways families contribute to student success?

Group Discussion

Lightning Round Share-Out:

Pre-Orientation Program: Bates College

Starting Off Strong: University of Dayton

Celebrating Scholars: Queens College

How does your institution support family engagement?



Barriers to Parental Engagement

Consider: Students may have complicated family relationships due to . . .

- Lack of familial support in college-going process
- Differing opinions about the value of education
- Guilt and conflict around pursuit of education
- Changing family dynamics and roles
- Hovering can limit students' sense of independence and development
- Exclusive nature of higher education and campus culture
- Engagement may be costly (i.e. time and financial resources)



Build Institutional Capacity

- Collaborate with campus partners
- Drive inclusion
- Explore asset-based approaches

Demystify the Academy

- Simplify terminology
- Highlight policies and procedures
- Share success strategies

Share Campus Resources

- Communicate boundaries (i.e. FERPA)
- Provide an overview of resources and support structures
- Create opportunities for engagement

Looking Ahead

Next Steps and Reminders

- First-year student survey deadline Sept 27th
- Distribute Collaborative Welcome Letters
- Contribute to the Kessler Scholars and Alumni LinkedIn page
- Collaborative cross-site programming: November 1 - 3

[Perla Salazar-Rangel](#)

Mon: 3:00 - 4:30 pm

[Shakima Clency](#)

Tues: 3:00 - 4:30 pm ET

[Gail Gibson](#)

Wed: 2:00 - 3:30 pm ET

Share Your Feedback

Toward Continuous Improvement

We welcome your feedback!

- In our work together, Collaborative staff will continue to build in regular points for your feedback and input
- Please stay online for a few last minutes to complete a brief survey about today's meeting

Thank you, and enjoy the fall season!





KESSLER

SCHOLARS



Kessler Scholars Collaborative
2723 S. State Street, Suite 150
Ann Arbor, MI 48104
info@kesslerscholars.org
734.600.0360